



9 Place the original facia removed at the third step of this guide.
This is the final result.

Facia plate installation kit for:

ALFA ROMEO

Model: Giulietta;

Year: 2013>

Kit content: facia plate adapter
mounting brackets + screws

Compatibility: ILX-702D

Customer code:

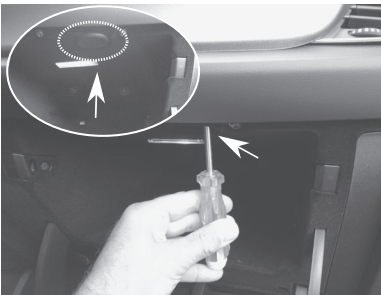


INSTALLATION MANUAL

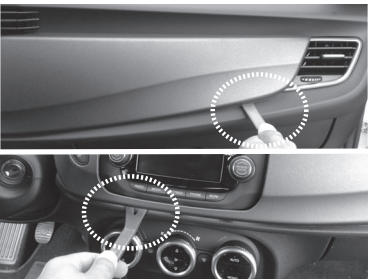
All installation work must be performed by a qualified professional installer only.
The manufacturer / dealer is not liable for any kind of incidental or indirect damages.



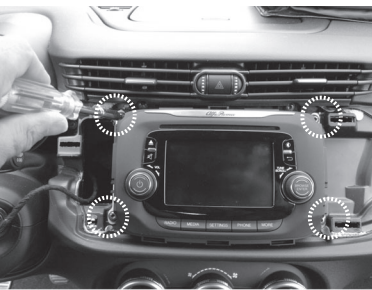
1 This is how the original dashboard looks like.



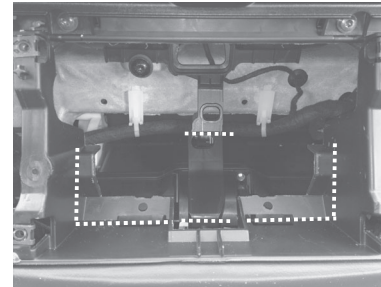
2 Remove the circular lid in the glove compartment and unscrew the retaining screw.



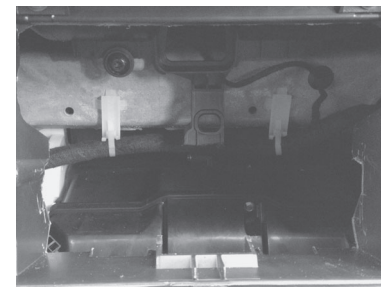
3 Remove the original fascia by leveraging as shown in the picture.



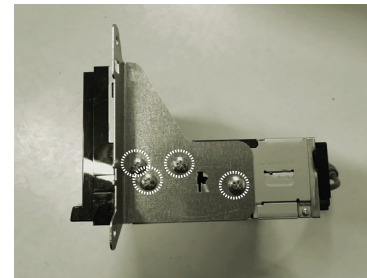
4 Unscrew the four screws and remove the original head unit; disconnect the plugs.



5 In order to clear space for the radio, cut and remove the plastic parts along the lines highlighted in the picture.



6 This is the result after cutting.



7 Mount both brackets on the aftermarket radio unit.



8 Connect all cables, verify the proper functioning of the system and insert the unit into the housing. Place the fascia plate supplied and screw the four screws as shown in the picture.